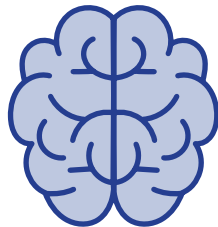




## BEHAVIOR ANALYSIS / PSYCHOLOGY TRANSFER PROGRAM AND BEHAVIOR ANALYSIS DEGREE COMPLETION PROGRAM

### OVERVIEW

The behavior analysis major provides students an opportunity to investigate the science of human behavior from a behavior analytic perspective. Through your experiences in this major, you will learn to determine the causes of behavior and design behavior interventions intended to promote socially significant human behavior. There is a strong hands-on component to this major where you will apply concepts from the classroom and develop clinical skills. This major's requirements reflect the coursework requirements of the Behavior Analyst Certification Board to be able to sit for the exam to become a Board-Certified Assistant Behavior Analyst (BCaBA).



### WHY THIS PROGRAM?

**Designed for Outcomes:** With hands-on practicum experience, students get the chance to work with people with special needs. Working side-by-side with caring professors and professionals in the field, you'll help create plans to meet the needs of individual children and adults. This program is built to provide you hands-on practicum experience.

**Hands-on Experience:** Our own Behavior Analysis Clinic partners with several community schools and organizations. We'll ensure you get the chance to work with those with autism, social disabilities, drug and alcohol addiction and other behaviors within the curriculum, so that you graduate ready to hit the ground running.

### PROGRAM ENTRY

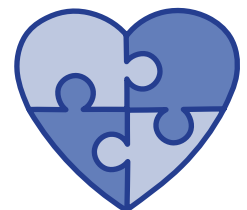
Students enrolled in this cooperative program complete their Associate of Arts at Western Iowa Tech Community College and Bachelor of Arts in Behavior Analysis at Briar Cliff University. Assessment and advising before registration will help ensure success in program planning and completion. Students that are interested in obtaining clinical hours at Briar Cliff University prior to admission should reach out to the Program Director.

### CAREER OUTLOOK

Individuals receiving a BCaBA most often provide direct applied behavior analytic services to clients (e.g., intellectual and developmental disabilities, education, higher education, parent and caregiver training, behavioral pediatrics, child welfare, brain injury rehabilitation, corrections and delinquency, and behavioral gerontology), but they also find employment in the supervision of such services, consulting with agencies, and in K-12 education settings.

### CAREER OPTIONS

- Brain injury & Rehabilitation clinics
- Addiction recovery specialists
- Juvenile correction facilities
- Counselor
- Clinic supervisor
- K-12 behavior specialist
- Registered Behavior Technician (RBT)
- Board Certified Assistant Behavior Analysis (BCaBA)



# BEHAVIOR ANALYSIS (BA) PROGRAM

## Western Iowa Tech Community College

### Term I (17 credits)

SDV 108	The College Experience	1
ENG 105	Comp 1	3
SOC 212	Diversity	3
MAT 157	Statistics	4
PSY 111	Intro to Psychology	3
SOC 110	Introduction to Sociology	3

### Term II (15 credits)

PSY 121	Developmental Psychology	3
SPC 112	Public Speaking	3
ENG 106	Comp 2	3
PHI 105	Intro to Ethics	3
PSY 222	Child Psychology	3

### Term III (16 credits)

PSY 205	Introduction to Forensic Psychology	3
SPC 122	Interpersonal Communication	3
HIS 152	US History Since 1877	3
BIO 163	Essentials of Anatomy & Physiology	4
SOC 217	Drugs (BCU Class PSYC 102)	3

### Term IV (16 credits)

PSY 241	Abnormal Psychology	3
SOC 180	Social Work Interactional Skills (SP only)	3
PSY 295	Co-Occurring Disorders (SP only)	3
SOC 120	Marriage & Family (SP only)	3
ART or MUS	Art or Music Appreciation	3
Elective		1

**Western Iowa Tech Program Total ..... 64 / 124**

## Transfer Scholarships

Awards up to \$14,000

Briar Cliff University transfer scholarships are only available to first-time transfer students who are entering our student body with a minimum transfer CGPA of 2.0. The total scholarship amount awarded will be allotted throughout your time at Briar Cliff University, provided a minimum CGPA of 2.0 is maintained.

## Questions?

Contact Admissions at (712) 279-5200 or email [Admissions@briarcliff.edu](mailto:Admissions@briarcliff.edu).

# BEHAVIOR ANALYSIS (BA) PROGRAM

## Briar Cliff University

In order to complete a Behavior Analysis degree at Briar Cliff University, the student must have completed the A.A. degree program in Psychology at Western Iowa Tech. Following is the sequence of online programs offered at Briar Cliff:

### Year 3 Fall Semester (15 credits)

CORE 310	Franciscan Values	2
BIVS 301	Digital Research for Academic Endeavors (8 weeks)	1
LIBA 410	Global Society	3
PSYC 111	Introduction to Behavior Sciences	3
PSYC 211	Professional Development	3
PSYC 295	Experimental Psychology	3

### Year 3 Spring Semester (17 credits)

PSYC 310	Single-Subject Research Methods	3
PSYC 311	Ethics in Behavior Analysis	3
PSYC 333	Assessment in Behavior Analysis	3
PSYC 400	Principles of Learning	3
PSYC 455	Behavioral Interventions	3

**Behavior Analysis Fieldwork Requirement** (≥9 credits) 2

### Year 4 Fall Semester (16 credits)

PSYC 111S	Senior Seminar – I	1
PSYC 051S	Applied Statistics	1
Behavior Analysis Elective (pick at least one)		3
PSYC 445	Behavioral Neuroscience	
PSYC 452	Behavioral Pharmacology	
PSYC 460	Special Topics in Behavior Analysis	
PSYC 493	Intensive Practicum in Behavior Analysis	6

**Behavior Analysis Fieldwork Requirement** (≥9 credits) 5

### Year 4 Spring Semester

PSYC 465	Senior Seminar – II	2
PSYC 493	Intensive Practicum in Behavior Analysis	3

**Behavior Analysis Fieldwork Requirement** (≥9 credits) 2

Behavior Analysis Elective (pick at least one) 3

PSYC 445	Behavioral Neuroscience	
PSYC 452	Behavioral Pharmacology	
PSYC 460	Special Topics in Behavior Analysis	

**120 total credits required for graduation.**

### Optional Double Major in Psychology (complete one additional course)

PSYC 205 Introduction to Forensics
PSYC 315 Psychology of Good & Evil
PSYC 325 Interviewing and Counseling
PSYC 345 Sensation and Perception
PSYC 354 Child & Adolescent Psychology
PSYC 355 Adulthood and Aging
PSYC 380 Personality
PSYC 401 Behavior and Evolution
PSYC 405 Criminal Forensics
PSYC 415 Cognitive Psychology
PSYC 430 Psychological Assessment
PSYC 445 Behavioral Neuroscience
PSYC 452 Behavioral Pharmacology

# 10-15

CLINICAL HOURS  
PER WEEK

# 100%

PLACEMENT RATE IN BEHAVIOR  
ANALYSIS CAREERS

Briar•Cliff  
UNIVERSITY

the catholic franciscan learning place

3303 Rebecca Street

Sioux City, IA 51104

(712) 279-5200

[admissions@briarcliff.edu](mailto:admissions@briarcliff.edu)



[briarcliff.edu](http://briarcliff.edu)